

DOOR HARDWARE FAB&FIX PATIO HANDLES

EMPLAS
The window and door fabricator of choice



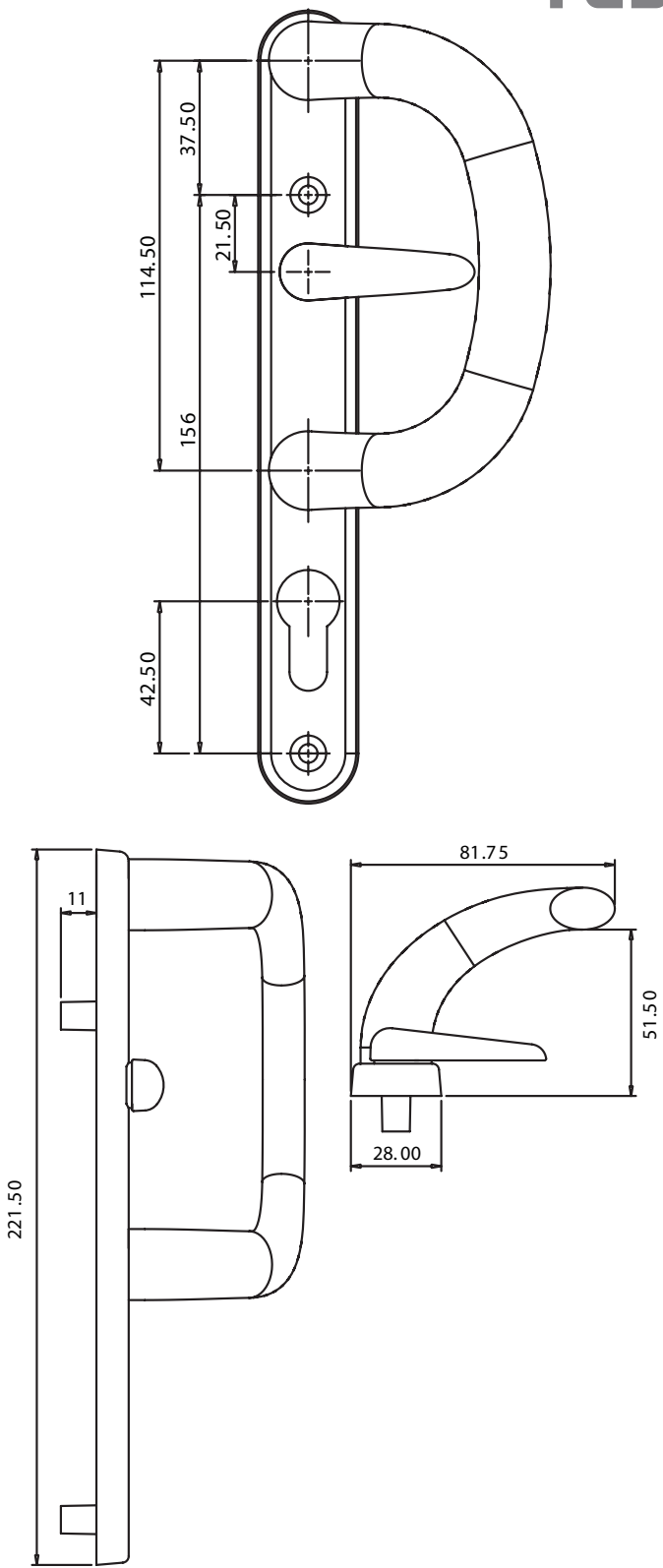
Fab&Fix

Features

- **Solid die cast Zinc construction**
Heavyweight handles with sturdy feel
- **Sculpted ergonomic D ring handles**
Easy to grip, softly sculptured
- **Non handed design**
D ring handles can easily be reversed
- **Includes screw and spindle pack to suit 40-70mm profiles**
Everything needed for installation included
- **Colour coordinated screw heads**
Perfectly matching hardware, even down to the smallest details
- **Integral latch lever**
Enables keyless secondary locking
- **Supplied with care instructions**
Helps the homeowner to keep the hardware in optimal condition
- **Each part packaged in a separate chamber, but supplied as a set**
No scratching of parts during transit

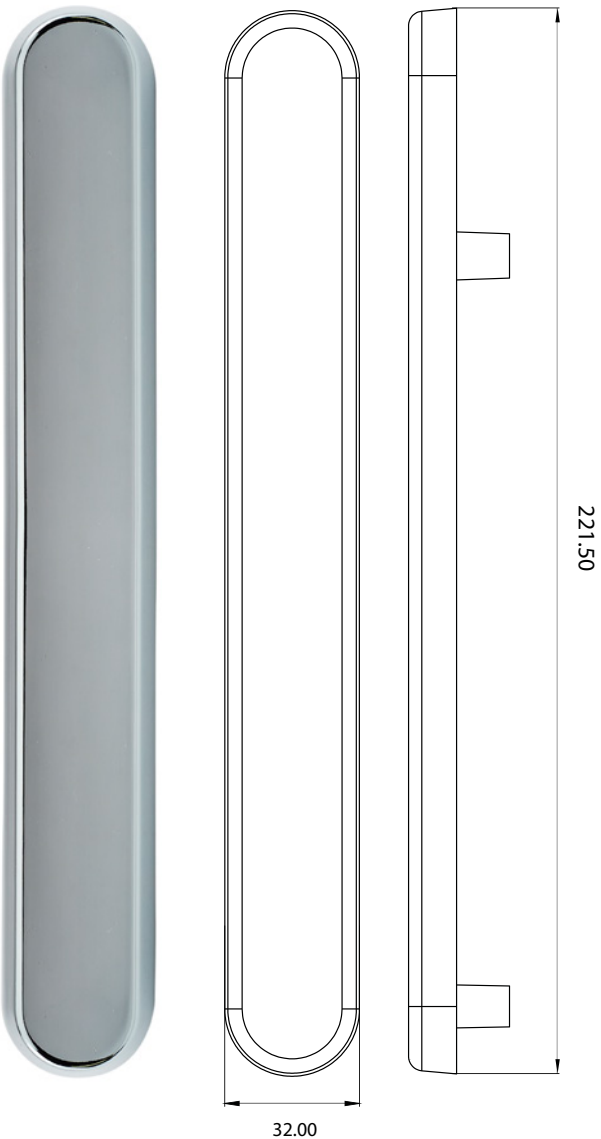
Technical Information	
Corrosion resistance Meets the requirements of BS EN 1670:2007 Grade 5 (480 hours)	
Material Specification	
Handle Grip and Backplate:	High quality Zinc for all Hardex finishes and Antique Black. High quality Zinc/Aluminium for White, Black, Anthracite Grey and Premium Satin finishes.
Coatings:	Hardex Chrome, Hardex Bronze, Hardex Gold, Hardex Graphite, Antique Black, Premium Satin and White.
Spindle / Screws:	Machine screws with colour coordinated heads for handle. 40mm - 70mm profiles (1 x 7mm x 75mm spindle, 1 x 7mm x 85mm spindle, 1 x 7mm x 95mm spindle; 2 x M5 x 58mm screws, 2x M5 x 70mm screws and 2 x M5 x 80mm screws)
Cylinder:	Euro Cylinder, 92mm PZ

Fab&Fix



Maintenance
For continued protection of the quality finish and appearance, we advise routine cleaning of all our external hardware. We recommend wiping it with a clean cloth soaked in warm water and mild detergent every month. Please refrain from using heavy-duty cleaners, containing Chlorine or Potassium. Moving parts should also be lightly lubricated using a light non-acidic mineral oil (e.g., "3 in 1") at least twice per year. The product may need to be adjusted and fixings tightened to ensure a satisfactory operation. This procedure is particularly essential if products are used within a 25-mile radius of coastal areas or close proximity to building sites or large industrial areas, where more frequent cleaning may be required to prevent the accumulation of corrosive contaminants.

Blanking Plate



Features

- **Solid die cast Zinc construction**
Sturdy feel
- **Flexible purpose component**
Enables all aspects of a job to be completed as a perfectly matching set
- **Baseplate common with all Pembroke handles**
Enables all aspects of a job to be completed as a perfectly matching set

Technical Information	
Corrosion resistance Meets the requirements of BS EN 1670:2007 Grade 5 (480 hours)	
Material Specification	
Backplate:	High quality Zinc for all finishes
Coatings:	Hardex Chrome, Hardex Gold, Hardex Graphite, Premium Satin, White and Black.